

**General Characteristics of SB Series Industrial Belt Driven Suspension Blowers**

The SB Series is a permanently lubricated, belt driven portable blower.

Can be used in industrial or commercial areas.

For indoor use only.

Used for cooling and high-volume air movement.

The Blades are made of aluminum and come in the three sizes, 36" Ø, 42" Ø, & 48" Ø.

Comes with a SJT type 3 conductor, 12' cord and on-off rocker switch (available only on the 120V, 1-phase models.)

For Safety, the SB Series are designed with powder coated front and rear guards.

The housing is made from a corrosion and dent proof high density polyethylene.

Motor Specifications: 1 phase, 120V, 2 Speed on the 30-36" models, 1 speed on 42" models.

Mounting chain not included

The motor is designed with a ball bearing system & permanent split capacitor.

These products are ETL-CETL listed.

Note: All products listed in this section are custom built and subject to 100% cancellation/restocking charges. The photograph is a representation of stocked model's actual models may vary in appearance.

The SB Series meets OSHA standards.

Made in the U.S.A.



**Product Applications of SB Series Industrial Belt Driven Suspension Blowers**

For industrial and commercial use.

Used for cooling factories, shops, bakeries, loading docks, laundries, gymnasiums, warehouses, aircraft hangars, and virtually any place a high volume of air movement is required.

For indoor use.

**Warranty of SB Series Industrial Belt Driven Suspension Blowers**

Manufacturer's Warranty: 1 year.



**Specific Characteristics of SB Series Industrial Belt Driven Suspension Blowers**

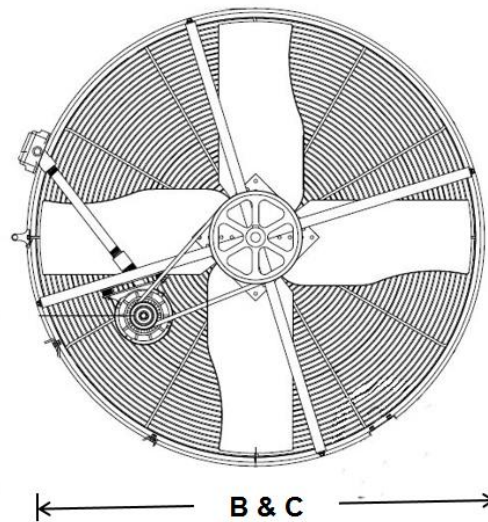
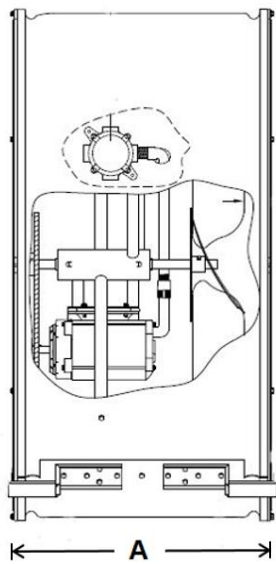
Item #	Manufacturing #	Size Ø(In.)	CFM	Volts V	Amperes A	Phases PH	HP	RPM	Motor Type	Weight and Dimensions with Packaging	
										Lbs.	L,W,H In.
USSBI-001	SB 36-B	36	6900	115	8	1	1/2	500	ODP Open	122	21,42,42
USSBI-002	SB 42-B	42	10600	115	11	1	3/4	430	ODP Open	137	21,48,48



<b>USSBI-003</b>	SB 48-B	48	14400	115	15	1	1	390	ODP Open	157	21,54,54
<b>USSBI-004</b>	SB 36-B-3	36	6900	230/460	2.3/1.1	3	1/2	500	ODP Open	129	21,42,42
<b>USSBI-005</b>	SB 42-B-3	42	10600	230/460	3.3/1.5	3	3/4	430	ODP Open	145	21,48,48
<b>USSBI-006</b>	SB 48-B-3	48	14400	230/460	3.8/1.9	3	1	390	ODP Open	166	21,54,54

**Dimensions (In.) of SB Series Industrial Belt Driven Suspension Blowers**

Series	Length A	Width B	Height C
USSBI-001 & 004	17 5/8"	36.3"	36.3"
USSBI-002 & 005	20 5/8"	42.3"	42.3"
USSBI-003 & 006	20 5/8"	48.5"	48.5"



**Short Description of SB Series Industrial Belt Driven Suspension Blowers**

Item #	Manufacturing #	Short Description 300 Characters Maximum
		0123456789012345678901234567890123456789012345678901234567890123456789
<b>USSBI-001</b>	SB 36-B	36"Ø, 6900CFM, 115V, 8A, 1Ph, 1/2HP, 500RPM, ODP Open Motor.
<b>USSBI-002</b>	SB 42-B	42"Ø, 10600CFM, 115V, 8A, 1Ph, 1/2HP, 430RPM, ODP Open Motor.
<b>USSBI-003</b>	SB 48-B	48"Ø, 14400CFM, 115V, 8A, 1Ph, 1/2HP, 390RPM, ODP Open Motor.
<b>USSBI-004</b>	SB 36-B-3	36"Ø, 6900CFM, 230/460V, 2.3/1.1A, 3Ph, 1/2HP, 500RPM, ODP Open Motor.
<b>USSBI-005</b>	SB 42-B-3	42"Ø, 10600CFM, 230/460V, 3.3/1.5A, 3Ph, 3/4HP, 430RPM, ODP Open Motor.
<b>USSBI-006</b>	SB 48-B-3	48"Ø, 14400CFM, 230/460V, 3.8/1.9A, 3Ph, 1HP, 390RPM, ODP Open Motor.



<b>SEO Table of SB Series Industrial Belt Driven Suspension Blowers</b>	
<b>Title</b>	
TPI SB Series Industrial Belt Driven Suspension Blowers.	
<b>Meta Description</b>	
TPI SB Series Industrial Belt Driven Suspension Blowers for Industrial Use, TPI SB Series Industrial Belt Driven Suspension Blowers for Commercial use, TPI SB Series Industrial Belt Driven Suspension Blowers for Indoor Use, TPI SB Series Industrial Belt Driven Suspension Blowers for Cooling Use, TPI SB Series Industrial Belt Driven Suspension Blowers for High Air Volume Movement.	
<b>Meta Key Words</b>	
TPI SB Series Industrial Belt Driven Suspension Blowers for Industrial Use, TPI SB Series Industrial Belt Driven Suspension Blowers for Commercial use, TPI SB Series Industrial Belt Driven Suspension Blowers for Indoor Use, TPI SB Series Industrial Belt Driven Suspension Blowers for Cooling Use, TPI SB Series Industrial Belt Driven Suspension Blowers for High Air Volume Movement.	
<b>Meta URL (file name)</b>	
tpi-sb-series-industrial-belt-driven-suspension-blowers-us-english.htm	

<b>Product Line Description of SB Series Industrial Belt Driven Suspension Blowers</b>
<pre> &lt;FONT Size=1&gt; &lt;b&gt;Type:&lt;/b&gt; TPI SB Series Industrial Belt Driven Suspension Blowers&lt;br&gt; &lt;b&gt;Drive Type:&lt;/b&gt; Belt Drive&lt;br&gt; &lt;b&gt;Motor Type(s):&lt;/b&gt; ODP Open Motor&lt;br&gt; &lt;b&gt;Manufacturer:&lt;/b&gt; TPI&lt;br&gt; &lt;b&gt;Model Series:&lt;/b&gt; SB&lt;br&gt; &lt;b&gt;Voltage:&lt;/b&gt; 115 &amp; 230/460V&lt;br&gt; &lt;b&gt;Horse Power:&lt;/b&gt; 1/2, 3/4 &amp; 1HP&lt;br&gt; &lt;b&gt;Diameters:&lt;/b&gt; 36", 42", &amp; 48"&lt;br&gt; &lt;b&gt;Air Flow:&lt;/b&gt; 6900, 10600, &amp; 14400CFM&lt;br&gt; &lt;b&gt;Ship By:&lt;/b&gt; Free LTL Freight&lt;br&gt; &lt;/FONT&gt;                     </pre>